



Arsenàl.IT

Centro Veneto Ricerca e Innovazione per la Sanità Digitale

Health Information Exchange (HIE) an Italian Perspective

Claudio Saccavini

Technical Manager



The Consortium Arsenàl.IT: Veneto's Research Center for eHealth Innovation



Founded in 2005 as “Telemedicine Consortium”, currently groups all the 23 Local Health Authorities afferent to the Veneto Region.

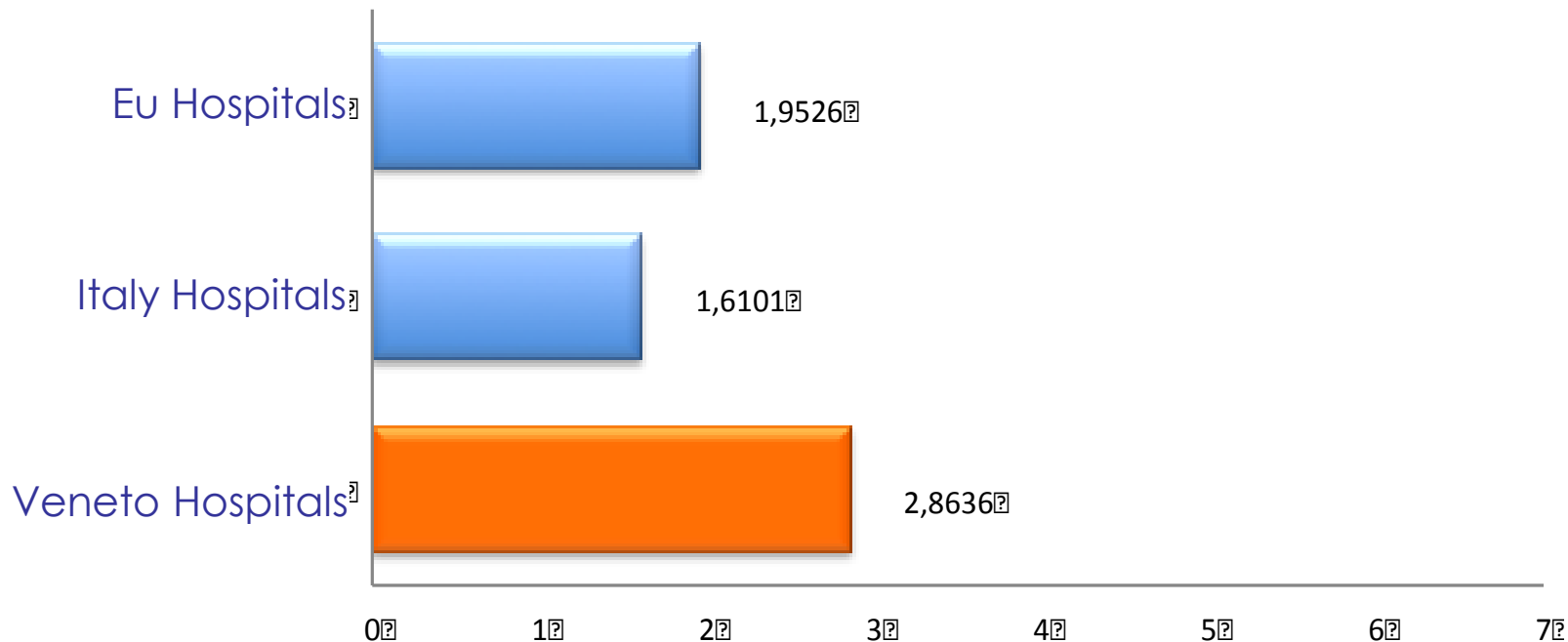
Has succeeded in highlighting the critical issues of interoperability, standardization and organizational impact as key factors for driving Telemedicine applications to the mainstream of the care delivery process.

HIMSS EMRAM score

Is a Region ready for HIE?

The **EMRAM (Electronic Medical Record Adoption Model)** is an eight-step process that allows you to analyze your organization's level of EMR adoption, chart your accomplishments, and track your progress against other healthcare organizations across the country. View and compare your scores in the HIMSS Analytics® Database.

Veneto Region Hospital EMRAM



Data Sharing

infrastructure

XDS, XUA, BPPC

Clinical Data Sharing

semantic

XDS-lab, PCC profiles

Data Sharing

infrastructure

XDS, XUA, BPPC

Clinical Pathways

workflow

XDW, PCC WD profiles

Clinical Data Sharing

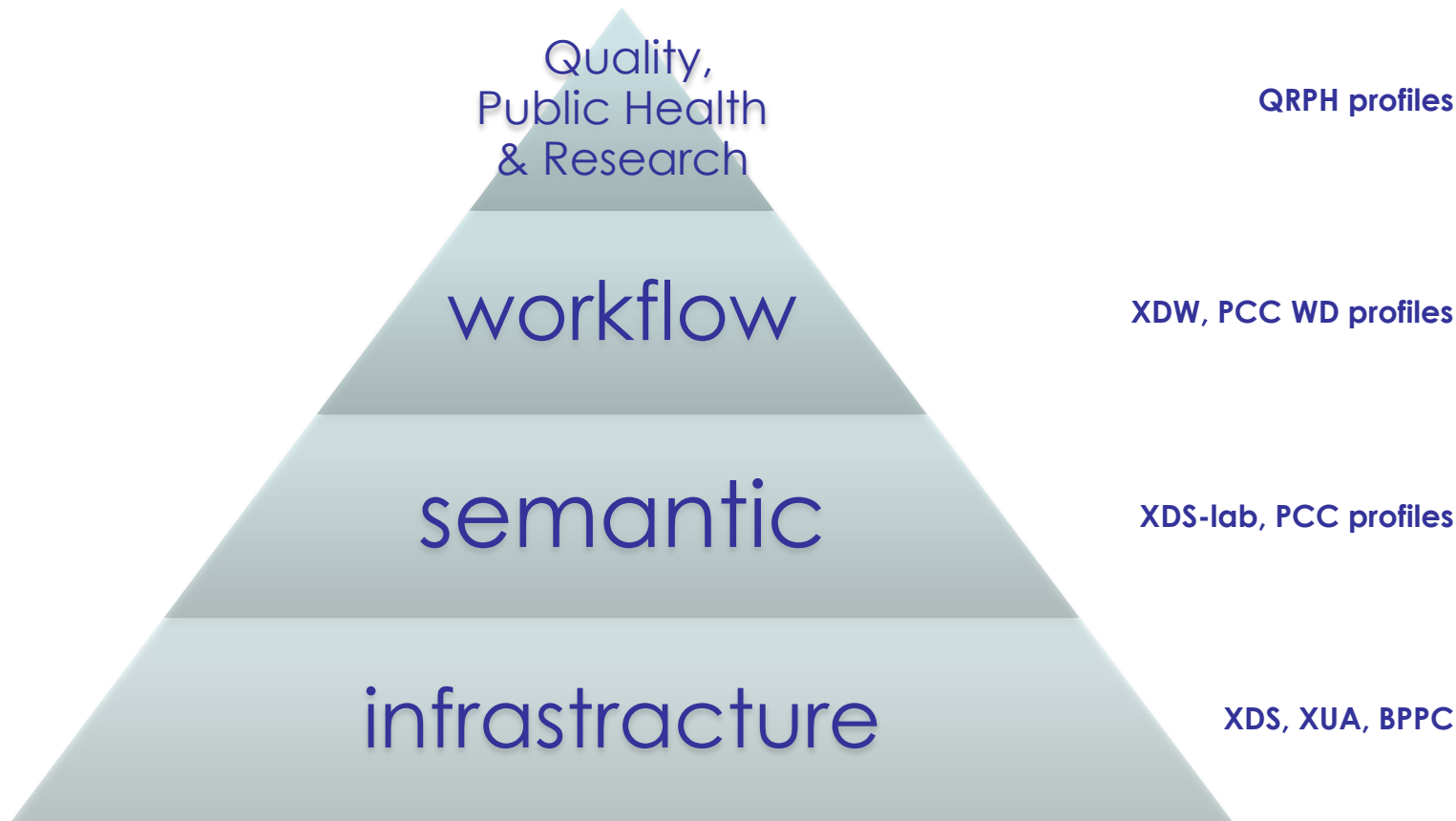
semantic

XDS-lab, PCC profiles

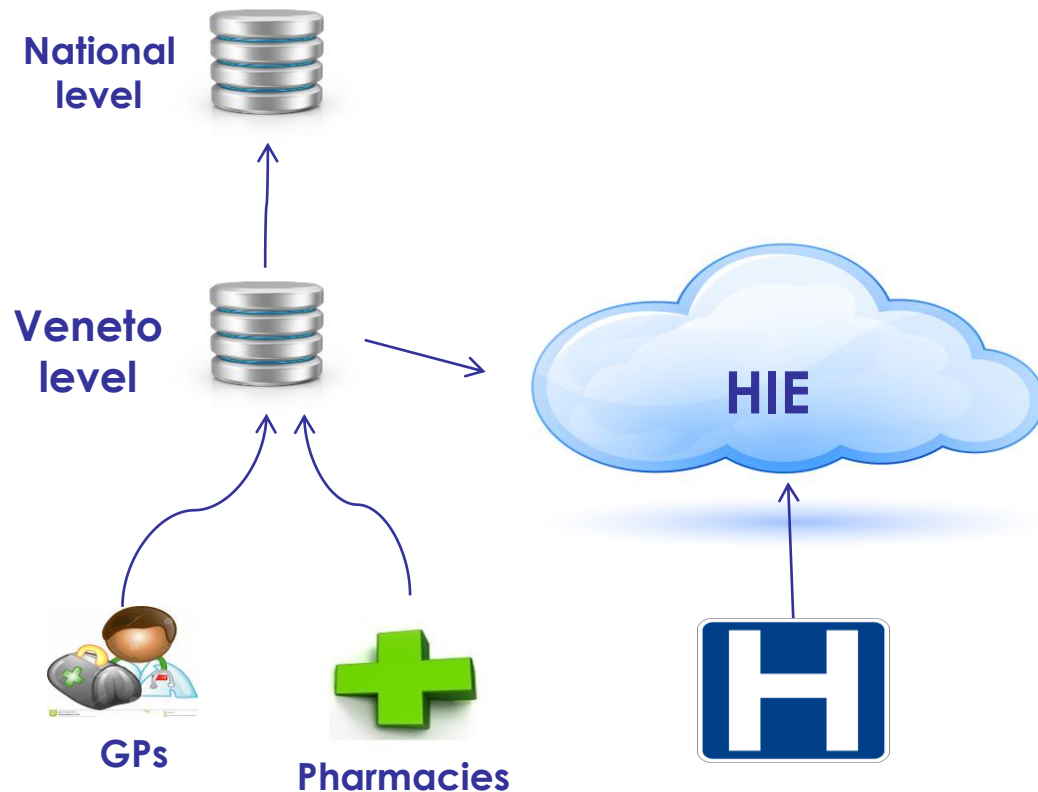
Data Sharing

infrastructure

XDS, XUA, BPPC



ePrescription & eReferral



MEDIDRUG 
CHECK

ePrescription expert System

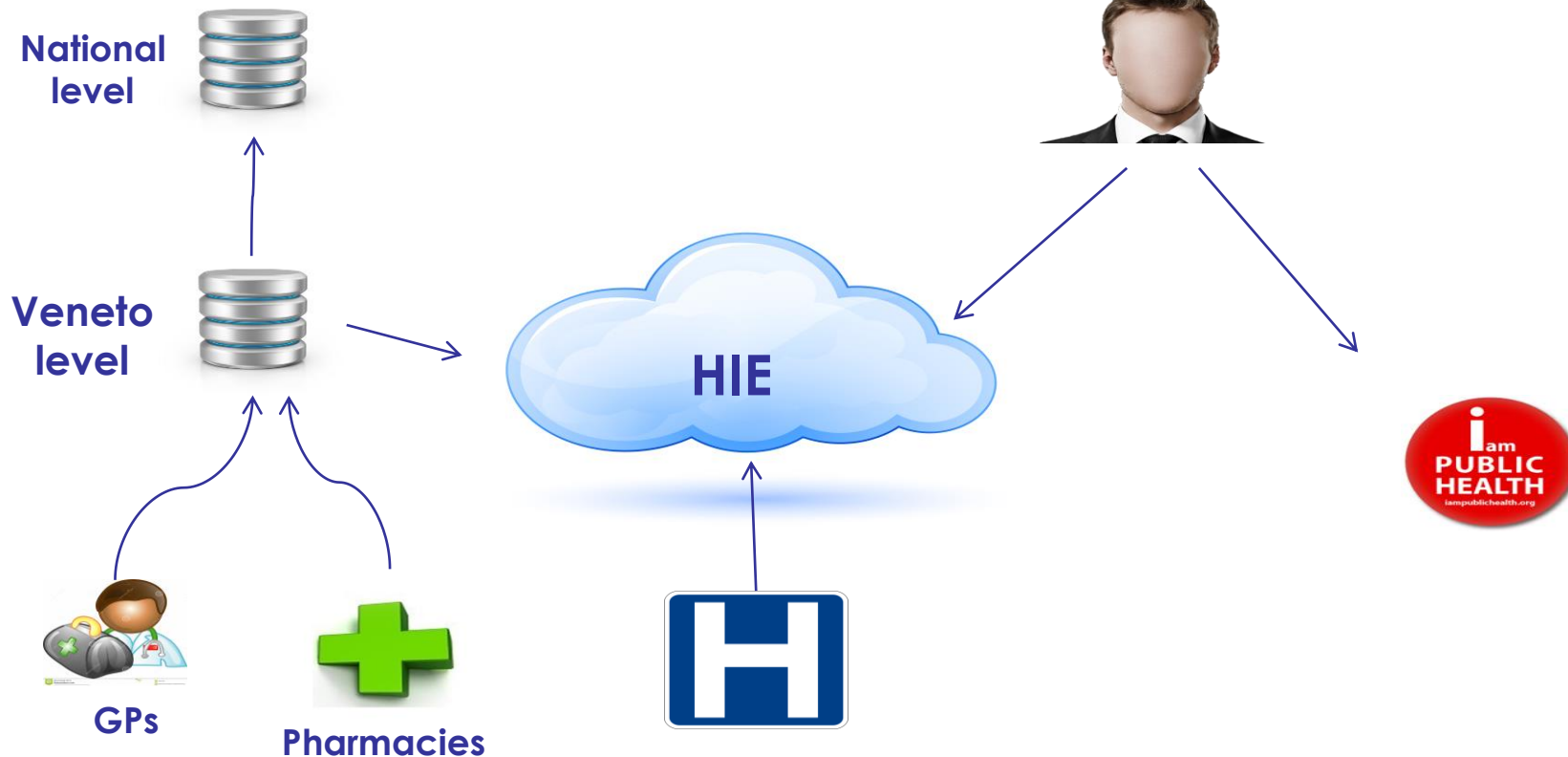


Ermete
eReferral expert System

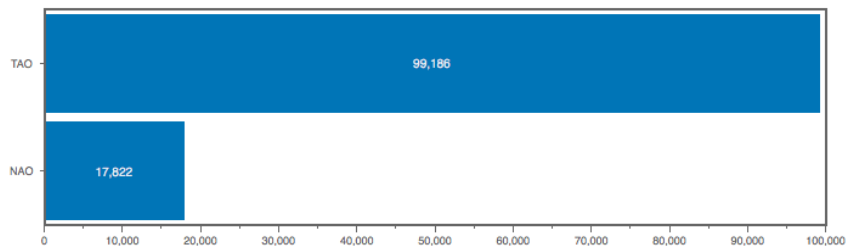
- Complete the ePrescription and eDispensation (3.800 GPs, 4.300 Hospital physicians, 1.330 Pharmacies, 40M/year)
- Complete eReferral request (20 M/year)
- Started at 1° Dec 2015 the visit booking by GPs
- Start at 1° January 2017 CDA Lab Report sharing/Discharge Summary/ED reports/Radiology Reports

From 1° July 2016 first deployment of MHD

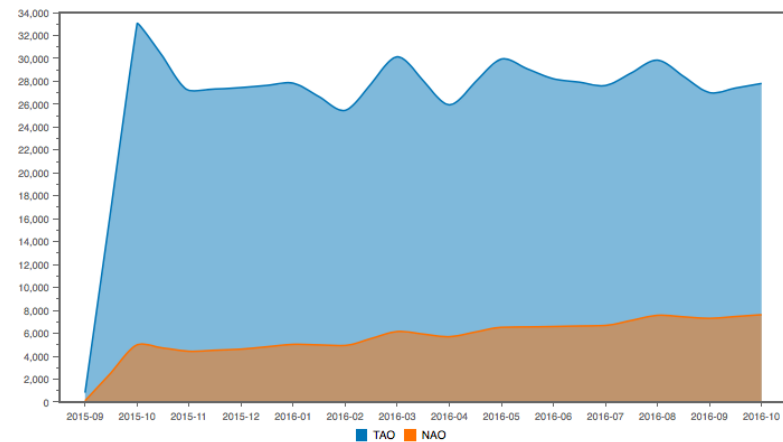
Mobile app to support citizens in ePrescription (request new prescription to the GP) and eDispensation in Farmacies



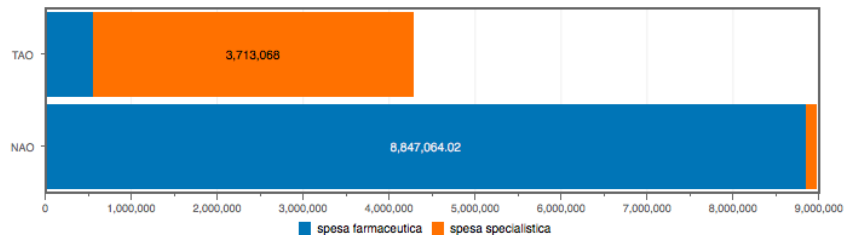
Numero pazienti a cui sono stati prescritti anticoagulanti orali nell'ultimo anno



Andamento mensile del numero pazienti a cui sono stati prescritti anticoagulanti orali nell'ultimo anno

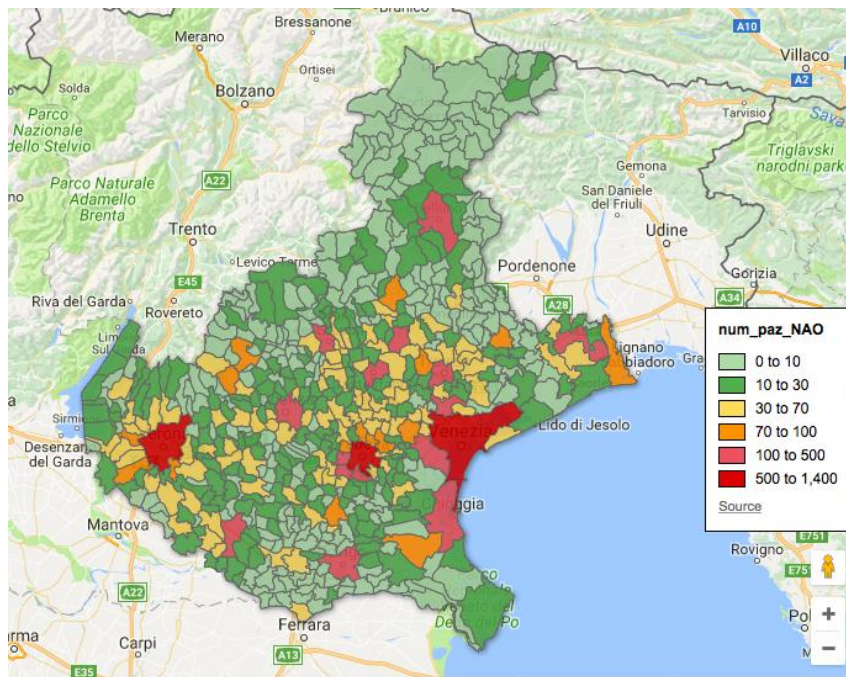


Spesa totale a carico di SSN per anticoagulanti orali nell'ultimo anno

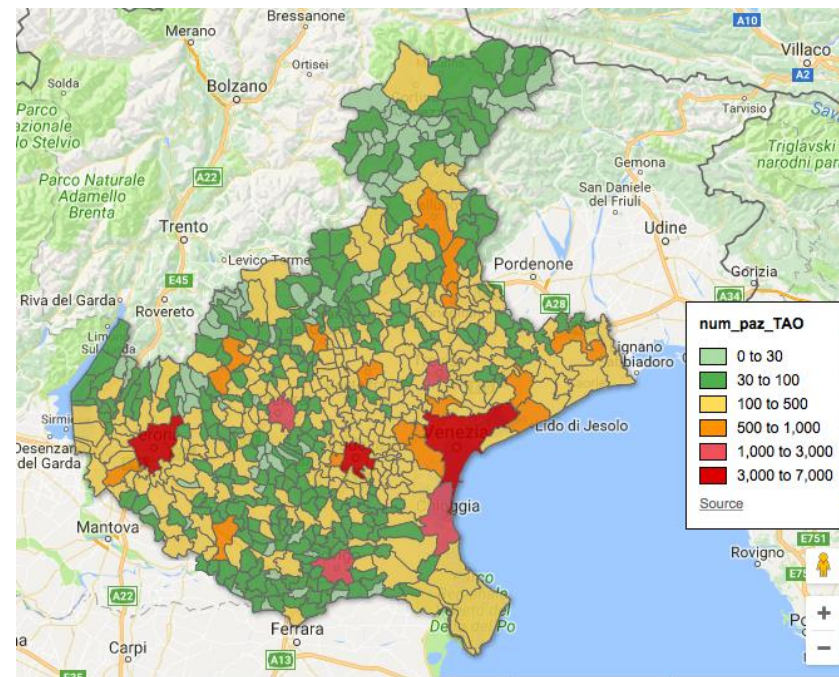


QRPH examples

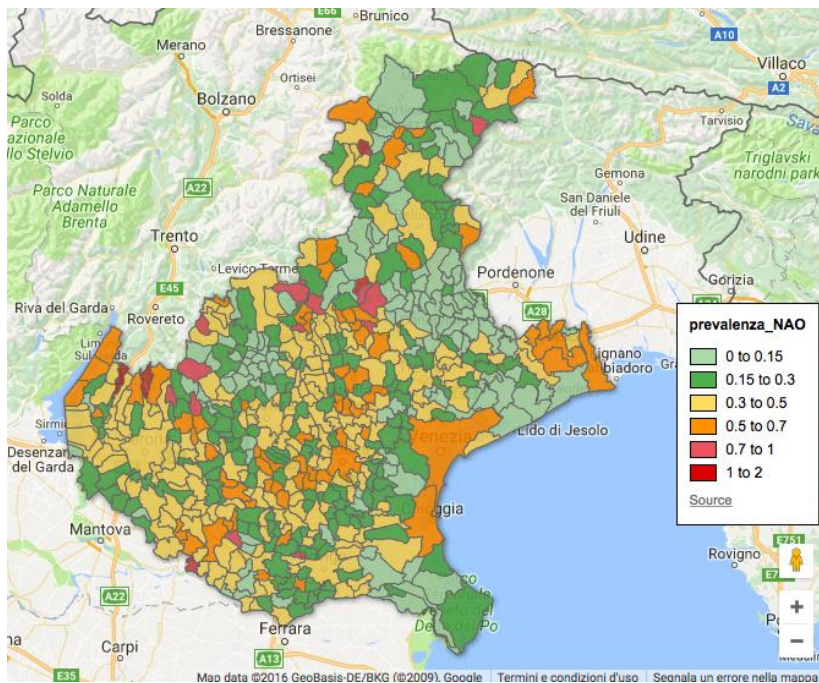
N. Pazienti in NAO



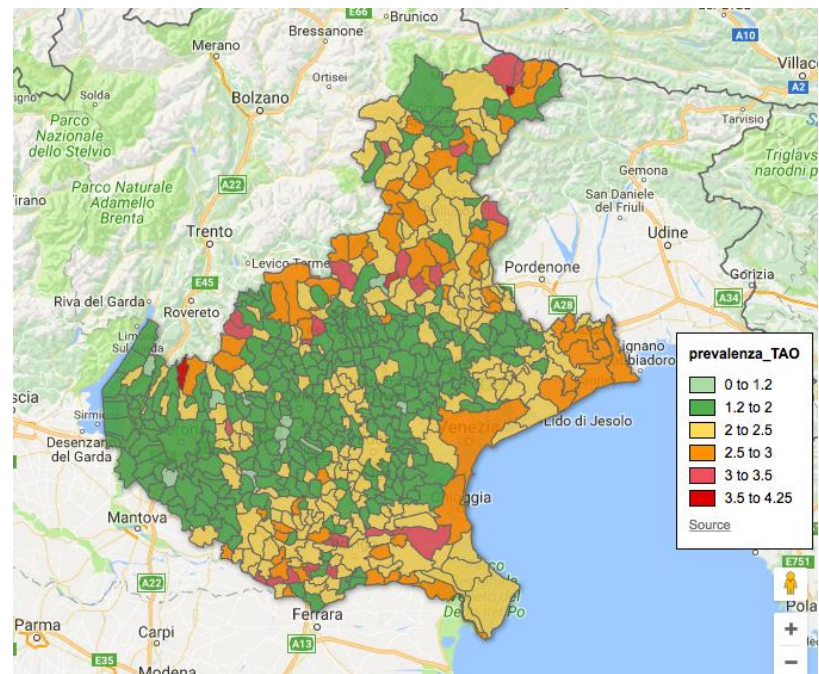
N. Pazienti in TAO



Prevalenza Pazienti in NAO



Prevalenza Pazienti in TAO





@Consorz_Arsenal



MRCLIC Veneto ESCAPE



www.youtube.com/user/consorzioarsenal



www.youtube.com/user/RENEWINGHEALTH



www.linkedin.com/company/arsen-l.it



consorzioarsenal_it