



KfH -
for our patients

Inhaltsverzeichnis

- ▶ KfH - for our patients 1
- ▶ The foundation and important milestones 3
- ▶ How everything began 5
- ▶ nationwide network 8
- ▶ The restructuring of the IT 10



The foundation and
important milestones

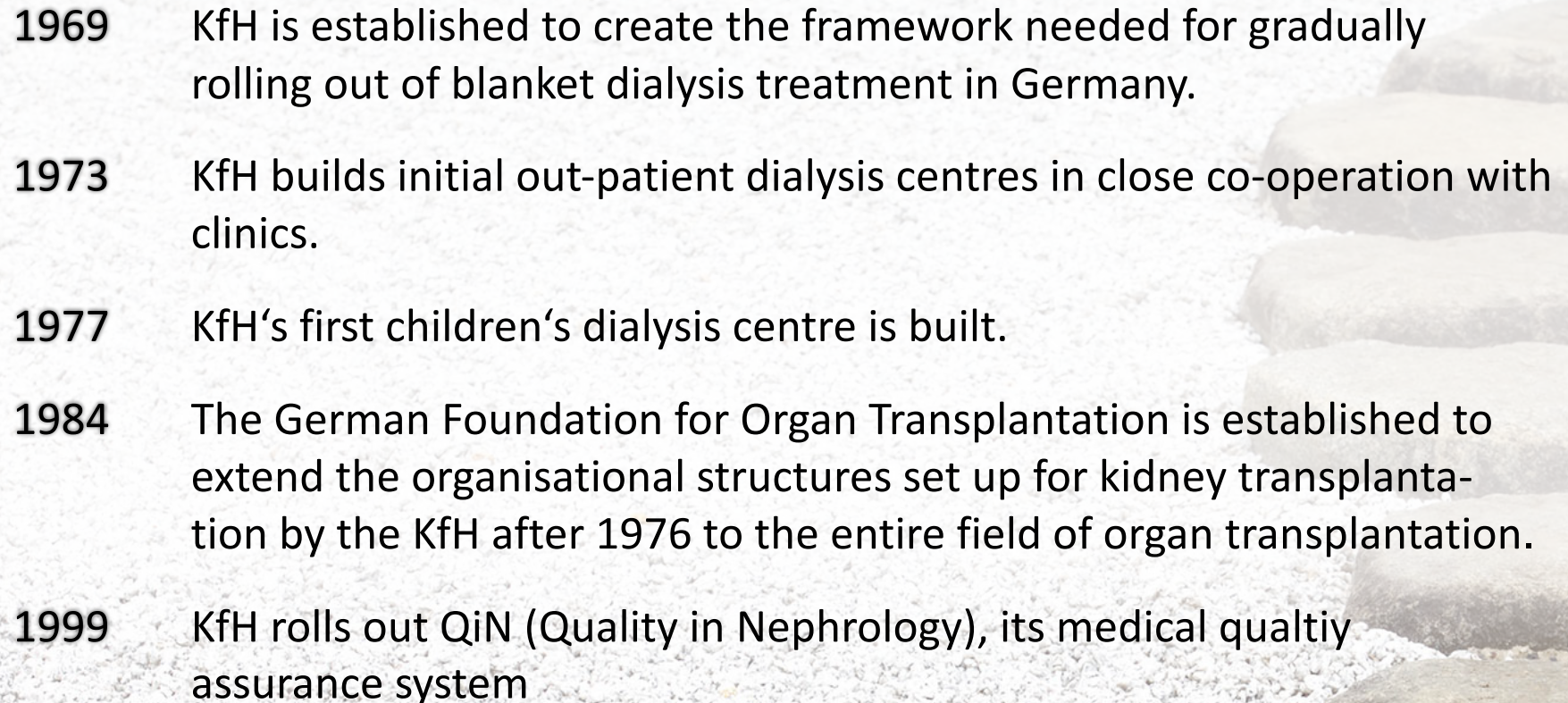
How everything began

The foundation of KfH

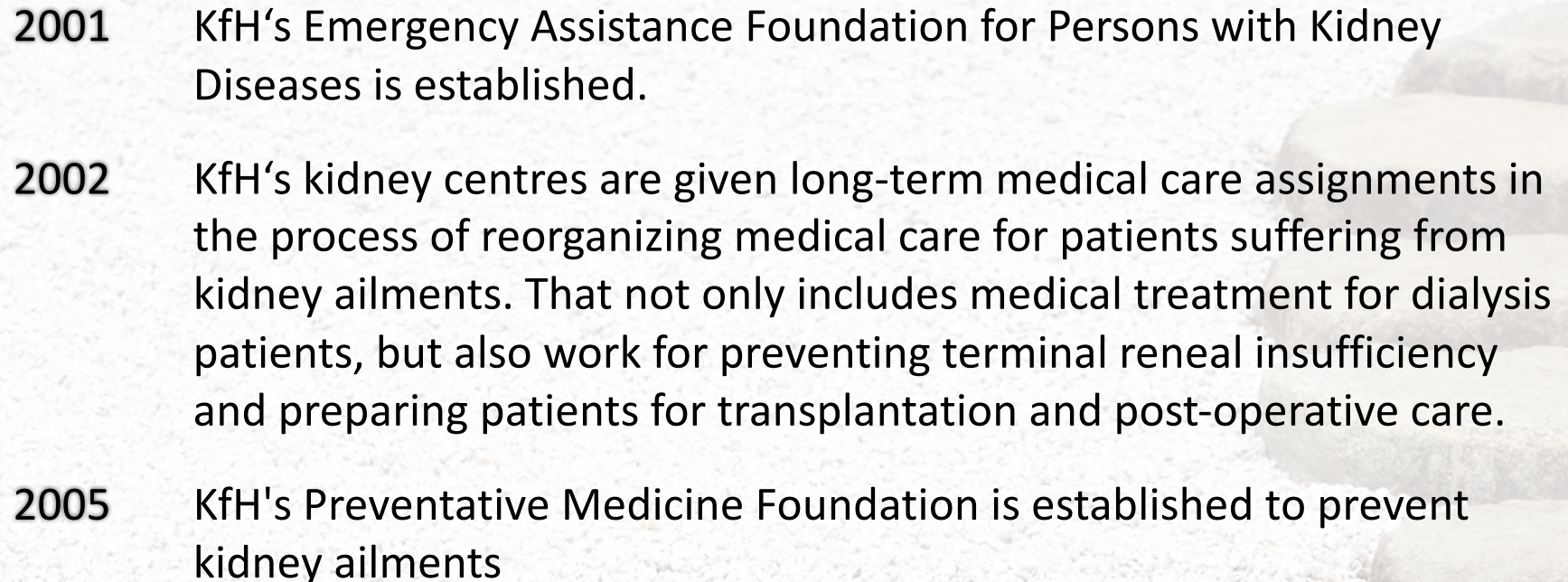
- ▶ In the mid-1960s, the care situation for patients suffering from chronic kidney ailments in Germany was dramatic: Although in 1969 3,000 persons contracted kidney ailments every year, it was only possible to treat 500 people with an artificial kidney.
- ▶ The others – most of whom were young people – died because there was no place to treat them.
- ▶ The reason was a lack of medical care structures and no rules on the costs of treatment in spite of constant advancements in dialysis technology
- ▶ This national crisis was the reason why the public service organisation KfH – Kuratorium für Heimdialyse was founded on October 7, 1969



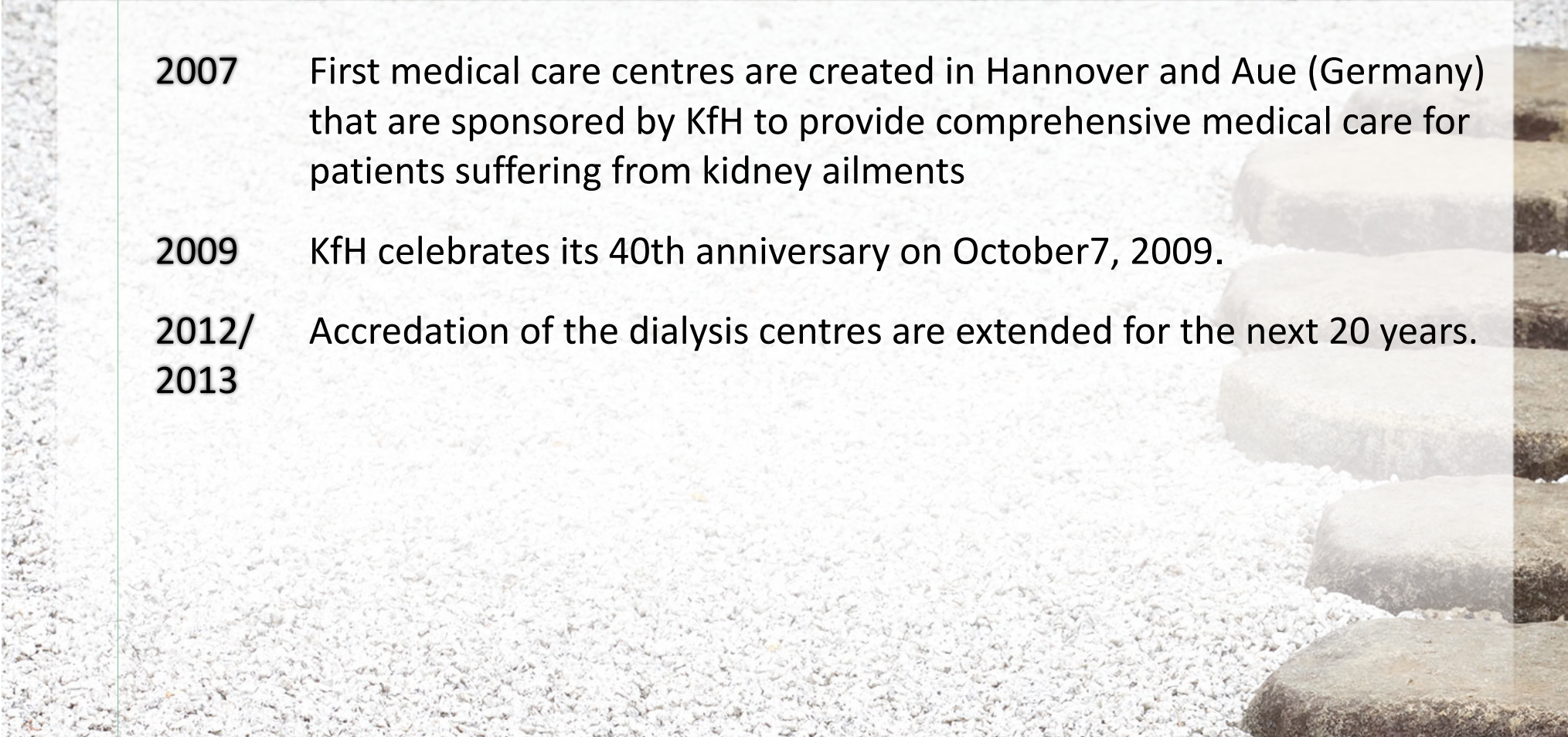
Over 45 Years of KfH

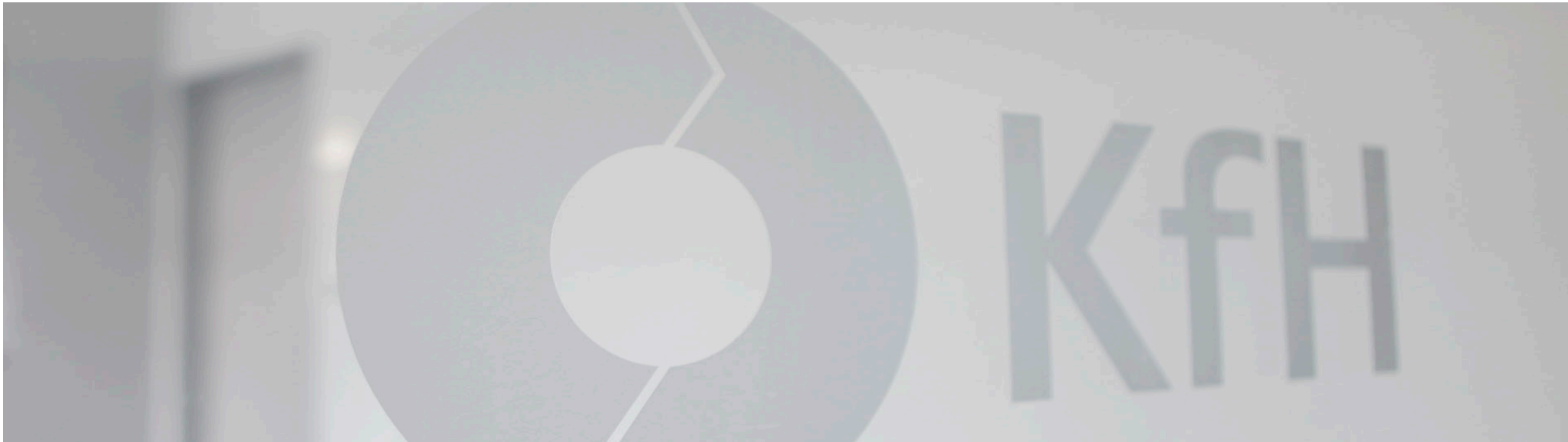
- 
- 1969** KfH is established to create the framework needed for gradually rolling out of blanket dialysis treatment in Germany.
 - 1973** KfH builds initial out-patient dialysis centres in close co-operation with clinics.
 - 1977** KfH's first children's dialysis centre is built.
 - 1984** The German Foundation for Organ Transplantation is established to extend the organisational structures set up for kidney transplantation by the KfH after 1976 to the entire field of organ transplantation.
 - 1999** KfH rolls out QiN (Quality in Nephrology), its medical quality assurance system

Over 45 Years of KfH

- 
- 2001** KfH's Emergency Assistance Foundation for Persons with Kidney Diseases is established.
- 2002** KfH's kidney centres are given long-term medical care assignments in the process of reorganizing medical care for patients suffering from kidney ailments. That not only includes medical treatment for dialysis patients, but also work for preventing terminal renal insufficiency and preparing patients for transplantation and post-operative care.
- 2005** KfH's Preventative Medicine Foundation is established to prevent kidney ailments

Over 45 Years of KfH

- 
- 2007** First medical care centres are created in Hannover and Aue (Germany) that are sponsored by KfH to provide comprehensive medical care for patients suffering from kidney ailments
 - 2009** KfH celebrates its 40th anniversary on October 7, 2009.
 - 2012/
2013** Accreditation of the dialysis centres are extended for the next 20 years.



nationwide network

nationwide network KfH at a glance

18.782 dialysis patients
($\frac{1}{4}$ in Germany)

188
dialysis centers

16
children's dialysis centre

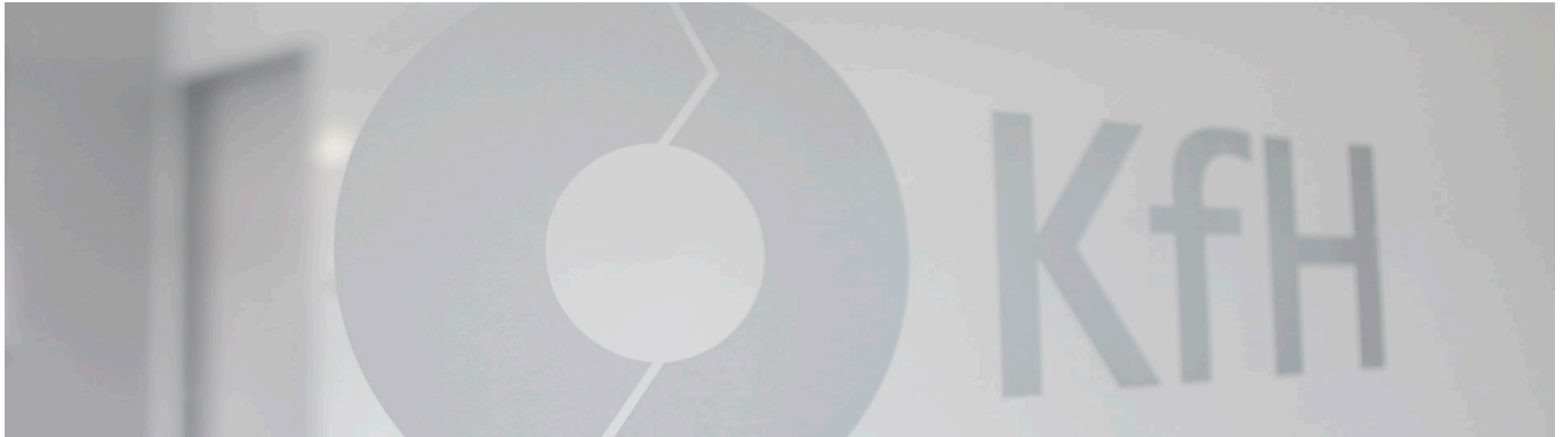
6.925 staff member

57.316
consultation patients

21
KfH medical care centres (MVZ)

8 logistics centre





The restructuring of the IT

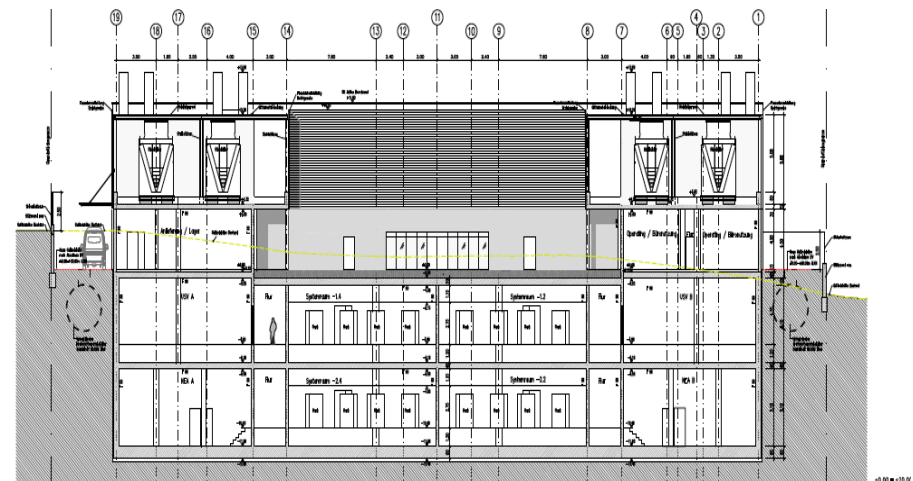
The Project: Challenges

- ▶ 6.000 users
- ▶ 4.000 devices
- ▶ >350 servers (most of them “under the desk”)
- ▶ „Secure“ wide area network with max. 2 mbit traffic
- ▶ Decentralized, individually configured and locally run systems
- ▶ Internal and cross enterprise data exchange



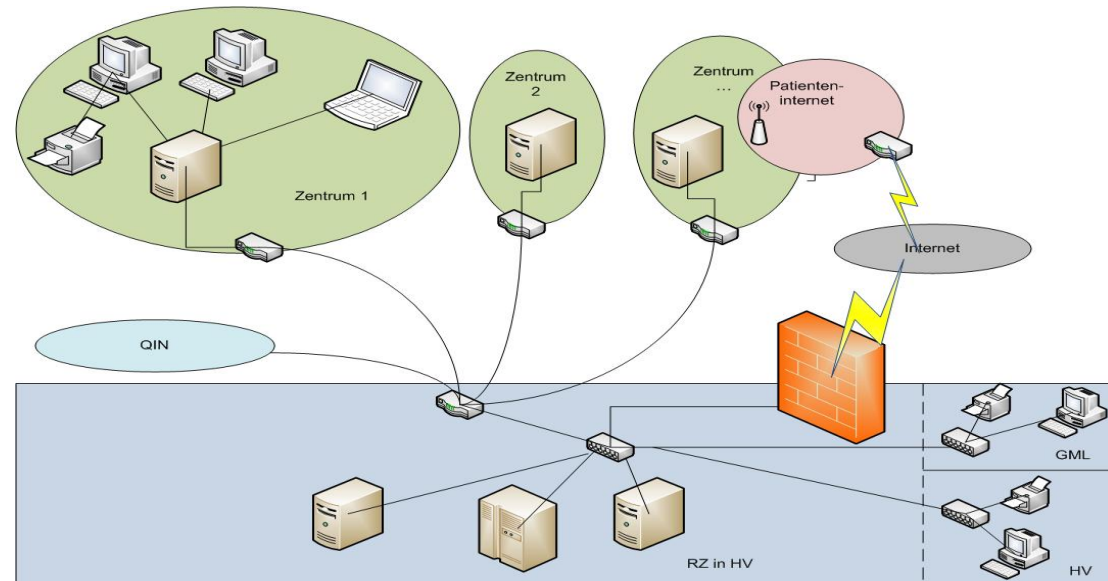
The Project: Solution

- ▶ Centralizing our servers in a secure data center
- ▶ Security: data access via terminal services only
- ▶ Additional native encryption on database layer
- ▶ Standardization of devices
- ▶ New product groups depending on operation
 - mobile: laptops/ tablets
 - stationary: terminals/ thin clients
 - interfacing medical devices: fat clients



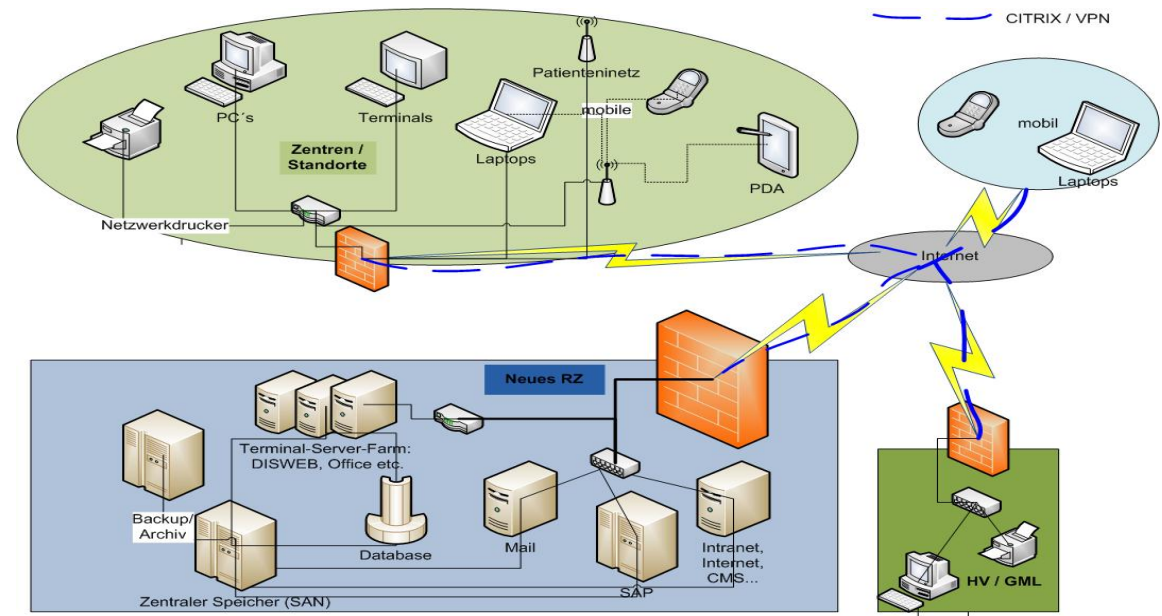
IT: Before

- ▶ Fragmentation of data & devices
- ▶ Lack of flexibility & service
- ▶ Performance troubles
- ▶ Security risks
- ▶ Limited usage



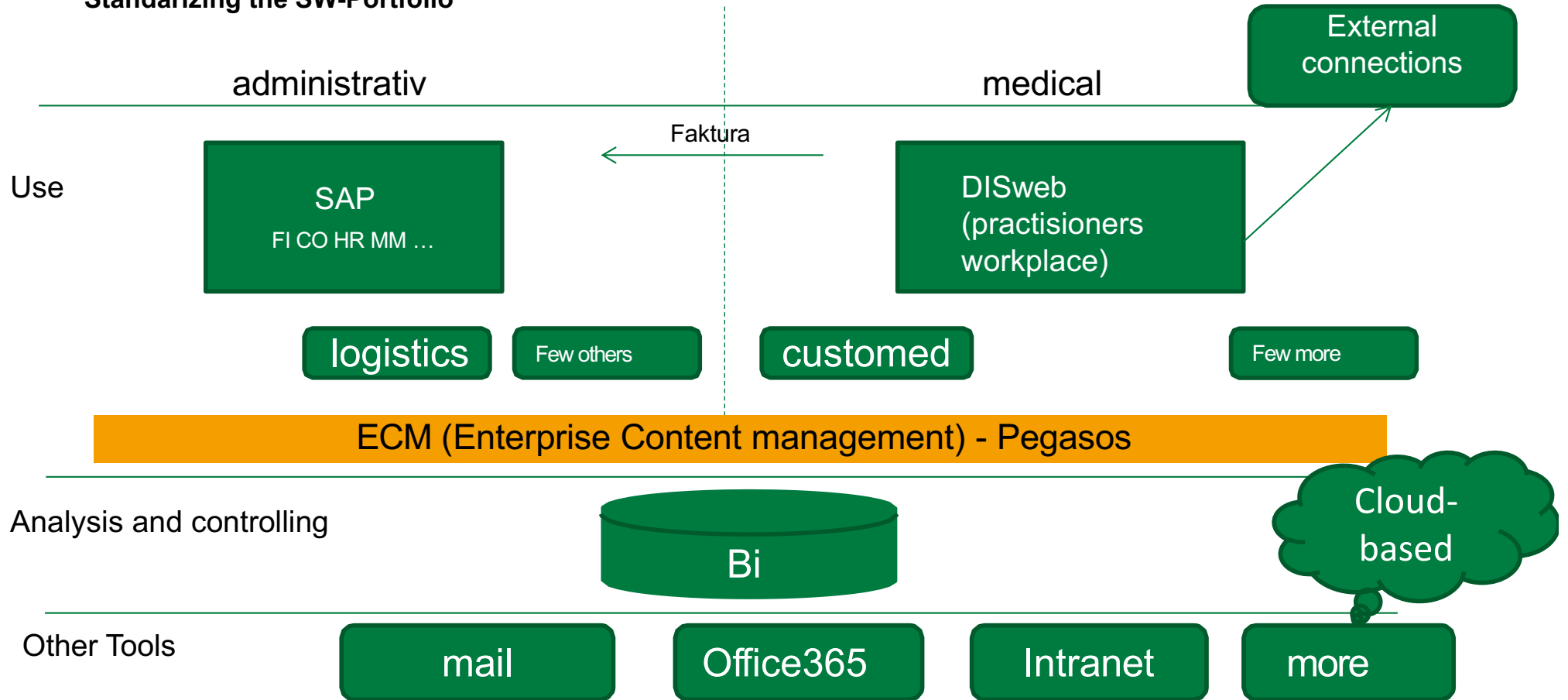
IT: Towards

- ▶ Standardized – while at the same time customizable
- ▶ Redundant secure data center
- ▶ Secure remote access from anywhere, anytime
- ▶ Avoidance of multiple data entry
- ▶ Better performance
- ▶ Reduction of costs



Software as a platform

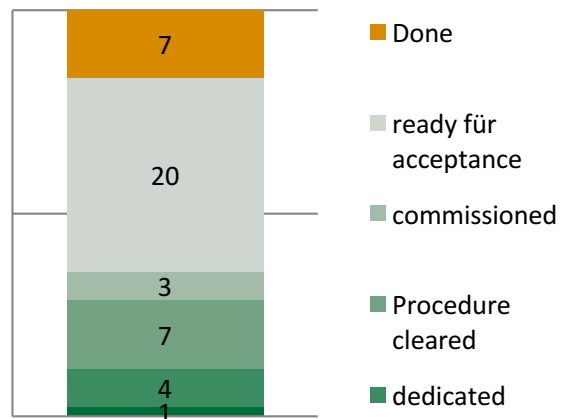
Standardizing the SW-Portfolio



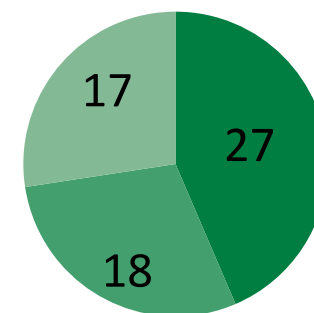
Standardization of Software



**Software over Citrix
(Status: 20.04.2017)**



Portfolio



- medical SW
- SW for administration
- other



Results

- ▶ We solved the technical problems.
- ▶ Today, we meet all legal requirements concerning data protection and therefore involve the governmental institutions concerned.
- ▶ We believe, by implementing the health cloud for ambulant medical centers and can be done for clinics, as well.
- ▶ User acceptance is crucial. - Convince them! It takes time and budget.

Technology is never the problem ...

... user acceptance and trust is.

Thank you for your attention.